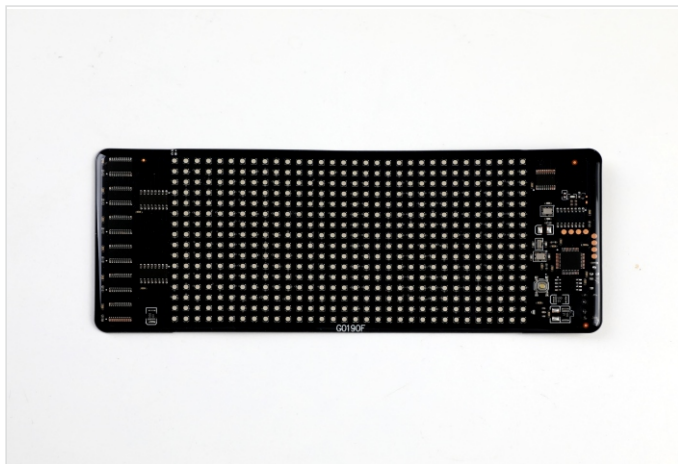


# LED Flexible Display Screen

## P4 16\*32 Pro Series

BP-P4-1632-FSB-1921M3-05C-011



### Features

1. 16x32 pixels resolution for crisp visuals, ultra-thin and flexible.
2. IP54-rated PU-coated screen resists dust, splashes, and humidity, ensuring reliability in dry or damp environments.
3. Rollable construction enables compact storage and portability.
4. Low-power DC 5V Type-C driven, compatible with most USB adapters and power banks.
5. Bluetooth-enabled smartphone app for wireless content management: upload text, animations, or custom graffiti, adjust brightness, scrolling speed, schedule displays.
6. Multi-mode display: choose static, scrolling, or animated effects. Customizable content library supported.
7. Peel-and-stick adhesive backing for instant mounting on clean, dry surfaces (glass, tile, metal).

### Application

- Ideal for: Retail promotions, event signage, smart home decor, hospitality messaging, and portable advertising solutions.

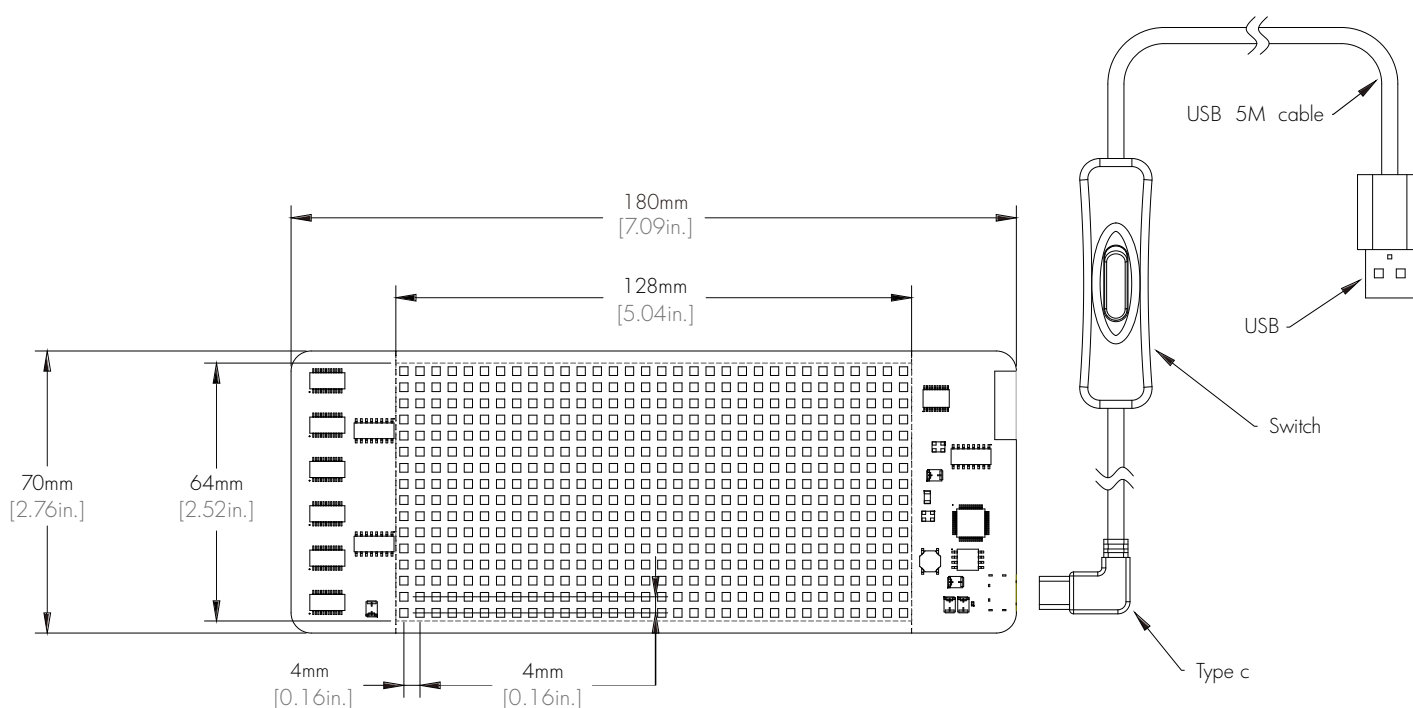


# LED Flexible Display Screen

## Specification

Flexible Screen			
Product Series:	P4 16*32 Pro Series	Input Voltage:	DC 5V
Part No. :	BP-P4-1632-FSB-1921M3-05C-011	Max. Power:	3W
Dimension:	L180xW70xH3mm [L7.09xW2.76xH0.12in.]	Power Mode:	Type-C
Resolution:	16x32 pixels	Control:	Smartphone APP+Bluetooth
Pixel Pitch:	P4 (4mm)[0.16in.]	Minimum Bending Diameter:	80mm[3.15in.]
LED Chip:	1921RGB	App Languages:	Chinese, Traditional Chinese, English, German, French, Russian, Italian, Portuguese, Spanish, Thai, Indian, Vietnamese, Korean, Japanese, Arabic
Technology:	IP54 PU glue dripping process		
Operating Temperature:	-20°C ~ 45°C [-4~113°F]		

## Dimension



# LED Flexible Display Screen

## List



Display Screen



USB-Type C cable



Adhesive Tape



User Manual

## Package



Part No.	Color Box Dimension	Product Overall Weight	Carton Dimension	Quantity Per Carton	Total Weight
BP-P4-1632-FSB-1921M3-05C-011	L90×W90×H110mm [L3.54×W3.54×H4.33in.]	220±50g	L285×W285×H240mm [L11.22×W11.22×H9.45in.]	18 sets	4.49±0.5kg

## Notice

1. Please read the attached "User Manual" before using this product.
2. Please use DC 5V USB or DC 5V power supply to drive this product, otherwise the product will work improperly or damage the product.
3. Do not excessively bend or forcefully tear the screen, it may damage the screen circuit.
4. Before pasting or installing, ensure that the installation surface of the pasted position is clean and dry.
5. Connect the power supply first, and then turn on the power switch, do not quickly repeat the switch more than 2 times within 3 seconds.
6. Power on the device first, and then open the app to search for the device after the screen lights up.
7. Do not pair through the Bluetooth setting menu, simply open the app to connect the device directly.
8. The operation interface of APP varies from different size of products.

## Edition

Release Date	Issuance of Category
2025.07.03	The 1st. Version